

Rittal – The System.

Faster – better – everywhere.



Beat the Heat.

Innovative intelligent cooling technology for industrial IT solutions

Maximum efficiency in minimal space



Our Blue e+ IT cooling units offer:

- Interfaces to all sensors, machines and devices
- Low latency in critical applications
- Capture & analysis of unstructured data to avoid unnecessary transmission to the cloud
- Interface to other edge data centers and to superimposed services in the cloud

Promo ends
August 31st



Accessories



► CMC Remote Management & Monitoring



► Environmental Monitoring



► Security Access



► Safety



► DET-AC Fire Alarm/Extinguisher System

More accessories: www.rittal.ca/datasolutions

ENCLOSURES

POWER DISTRIBUTION

CLIMATE CONTROL

IT INFRASTRUCTURE

SOFTWARE & SERVICES



FRIEDHELM LOH GROUP

www.rittal.ca

Rittal – The System.

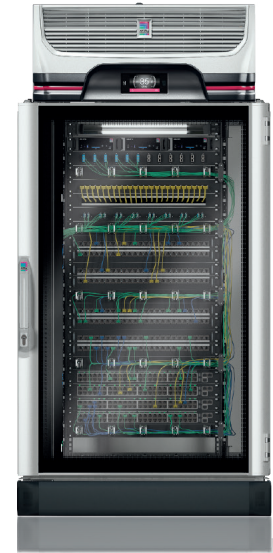
Faster – better – everywhere.

Smart Edge Solutions designed for quick & easy deployment in working environments. Each solution is tailored to maximize the use of the rack space, control cooling and offer remote monitoring and management. From Small offices, Network closets, Factory floors to Disaster recovery sites, these solutions have you covered.

DCiB 1/2 RACK 1.3KW (XCA0000230)

Smart Roof Mount Cooling Solution. Net Price: \$5,830.00

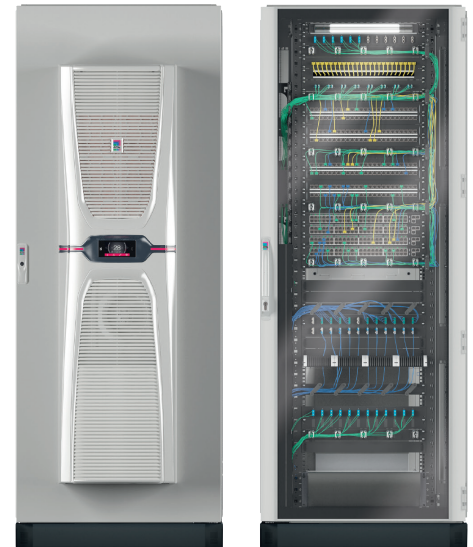
Rack Size H X W X D	Rack Spec	Power	Cooling Spec
Rack Size: 24U 1200 x 800 x 1000 mm Overall Size: 1515 x 800 x 1000 mm	TS-IT with Viewing Front Door, Solid Rear Door Color Grey (RAL7035). Side Panel 1200 x x1000 mm HD Kit, Air Baffle Kit Color Black RAL9005. With Accessories, Component Shelf 25Kg D400mm & DK 1U Fastener (M5) Pack. Load Capacity of 15000 N	BASIC PDU 120V 20A 1U Single Phase 12 x C13 L6-20P	SK Blue e +, Roof mounted, 1.3KW 110-230V 60Hz (Incl. SZ Door Operated Switch, Air Flow Baffle System & IoT Cooling Management Interface)



DCiB FULL RACK 2.6KW (XCA0000232)

Smart Rear Mount Cooling Solution. Net Price: \$6,292.49

Rack Size H x W X D	Rack Spec	Power	Cooling Spec
Rack Size: 42U 2000 x 800 x 1000 mm Overall size: 2000 x 800 x 1295 mm	TS-IT with Viewing Front Door, Solid Rear Door Color Grey (RAL7035). Side Panel 2000 x x1000 mm HD Kit, Air Baffle Kit Color Black RAL9005. With Accessories Component Shelf 25Kg D400mm & DK 1U Fastener (M5) Pack	BASIC PDU 120V 20A 1U Single Phase 12 x C13 L6-20P	SK Blue e +, Wall mounted, 2.6KW 110-230V 60Hz (Incl. Roof Panel 1000Wx800D RAL7035 + SZ Door Operated Switch, Air Flow Baffle System & IoT Cooling Management Interface)



Rittal Systems Ltd. (Head Office)
 6485 Ordan Drive • Mississauga Ontario L5T 1X2
 Phone: 905-795-0777 • Fax: 905-795-9548 • Toll-free:
 800-399-0748 Email: IT@rittal.ca • Online: www.rittal.ca



ENCLOSURES

POWER DISTRIBUTION

CLIMATE CONTROL

IT INFRASTRUCTURE

SOFTWARE & SERVICES

FRIEDHELM LOH GROUP

www.rittal.ca