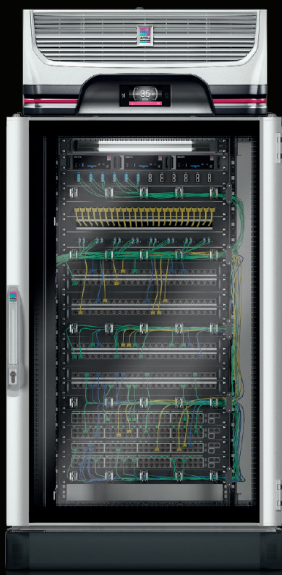


Rittal – The System.

Faster – better – everywhere.

► Stay Cool & Connected. Rittal Summer Cooling Promo on popular cooling & monitoring technology solutions



Edge Data Centres are often located in harsh environments where protection of IT equipment is crucial. Our cooling & monitoring solutions are designed to operate in these environments by maintaining the proper conditions for your IT equipment!

This year, we are pleased to extend our special prices to:

- Single enclosure solution with roof-top air conditioner
- IoT Interface
- CMC III Processing Units
- CMC III Sensors

Promo ends
August 31st



► CMC III Processing Unit



► CMC III Sensor



► IoT Interface

ENCLOSURES

POWER DISTRIBUTION

CLIMATE CONTROL

IT INFRASTRUCTURE

SOFTWARE & SERVICES



Rittal's Summer Cooling Promo on popular Data Solutions

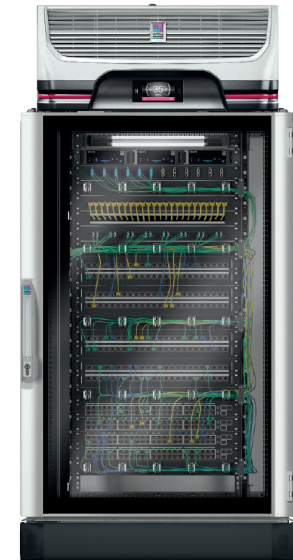
EAC-13R: 24U TS IT w/1.3kW Roof Mount AC

Enclosure & Accessories

- | | |
|---|--|
| 1 | Ea. TS IT Global Rack - 800mm/32"(w) x 1000mm/40"(d) x 1200mm/48" - 24RU(h), RAL 7035.
Configured system includes:
-Solid Front View Door
-Solid Steel Rear Door
-TS IT Global 19" Mounting Rails (F&R)
- Solid Roof with cutout for AC
-Comfort Handles and Key Lock Inserts (F&R)
-TS 8 Base Frame with Gland Plates
- Leveling feet (shipped loose) |
| 1 | Pair TS 8 Sidewalls - 1200mm/48"(h) x 1000mm/40"(d), RAL7035, Single Panel. |
| 1 | Set Cable Guide D-rings, 3x2", pack of 10 |
| 1 | Ea. Section for cable entry in base plate, rear, 800mm/32"(w). Optional. |
| 1 | Ea. LED Enclosure Light, 600 lumens, 100-240V |
| 1 | Ea. LED Enclosure Light Connection cable, 118" long. Provided with |
| 1 | Ea. Temperature sensor (shipped loose) |

Blue e+ AC and IoT Interface

- | | |
|---|--|
| 1 | Ea. Blue e+ Cooling Unit, Roof Mount, 1.3kW, Multi-voltage, Type 12, e+ Controller, RAL 7035. Power cable to be fabricated by customer |
| 2 | Ea. Door limit switch. Factory installed. |
| 2 | Ea. Connection cable for door limit switch - if Start-up Service is ordered. Otherwise, customer needs to fabricate own cable. |
| 1 | Ea. IoT Interface |
| 1 | Ea. CAN Bus connection cable - 1.5m |



EAC-13R Edge Unit with roof-top AC

*Max 4 CMC Sensors (Min. 1x 7030.111 + 1x 7030.093) can be added to IoT device for temp monitoring,

IoT Interface

SK 3124.300

A central component for the intelligent networking of Rittal cooling solutions or sensors for monitoring physical ambient conditions. IoT Device can be added to any Rittal Blue e+ Air Coolers. As additional option, up to 4x Max Sensors can be added (Min.1x 7030.111 + 1x 7030.093).



CMC III Processing Unit

DK 7030.010; DK 7030.060 (Power)

Central to the CMC III Monitoring system. CMC Package deal, can be added to EDGE EAC13R Unit (or existing enclosures) for additional environmental monitoring. (Min.Order 1x 7030.010, 1x 7030.060, 1x 7030.111, 1x 7030.093).



CMC III Sensor*

DK 7030.111; DK 7030.093 (Cable)

Monitor the physical environment. Sensor CMC 7030.111 + CMC CAN-Bus Wire 7030.093, can be added to the IoT 3124.300 Unit, to CMC 7030.010 Unit (Min.1 each x Sensor & Cable).



ENCLOSURES

POWER DISTRIBUTION

CLIMATE CONTROL

IT INFRASTRUCTURE

SOFTWARE & SERVICES